



# Quick Install Instructions

**Note:** Please check the README.TXT file on the product CD-ROM disk for updated instructions.

Before running the software you will need to install your data acquisition hardware. If you are using a DI-720 external box follow the 720 instruction. If you are still using a legacy 400 series follow the instructions at the end of this document.

## Hardware

### DATAQ DI-720 Series

1. Connect the power supply to the DI-720 as indicated in the DATAQ Instruments DI-720 manual.
2. Connect the male end of the parallel port cable to the female connector on the computer.
3. Connect the female end of the parallel port cable to the male parallel port interface connector on the back of the DI-720.
4. Connect the data acquisition cable to the rear of the voltage clamp (or interface box) and to the *left* most DB37 connector on the front of the DI-720.
5. Switch the DI-720 power to "On" and observe that the LEDs light up on the rear panel.

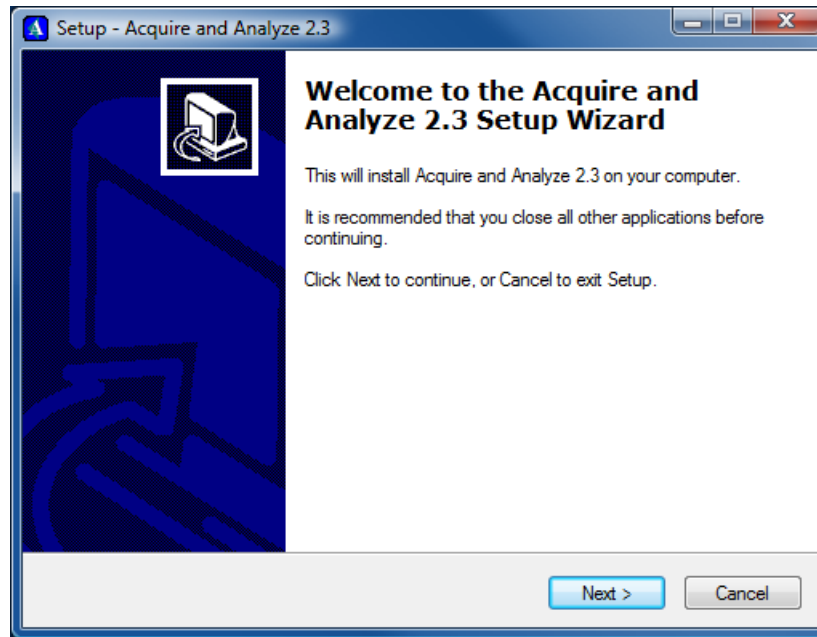
## Software

### Acquire & Analyze Installer

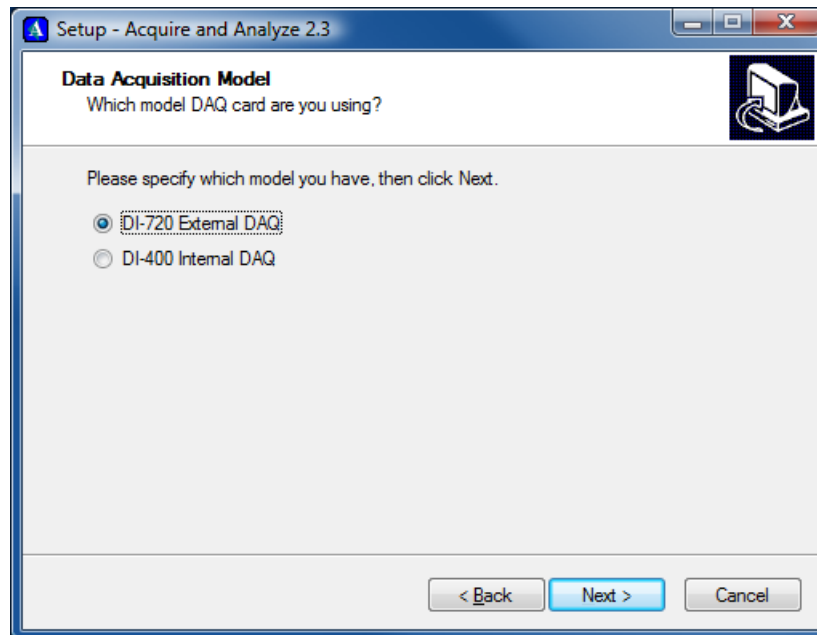
1. Run the **Acquire23XInstaller**.

**Note:** If prompted to run in administrative mode or to allow running the installer click **Allow**.

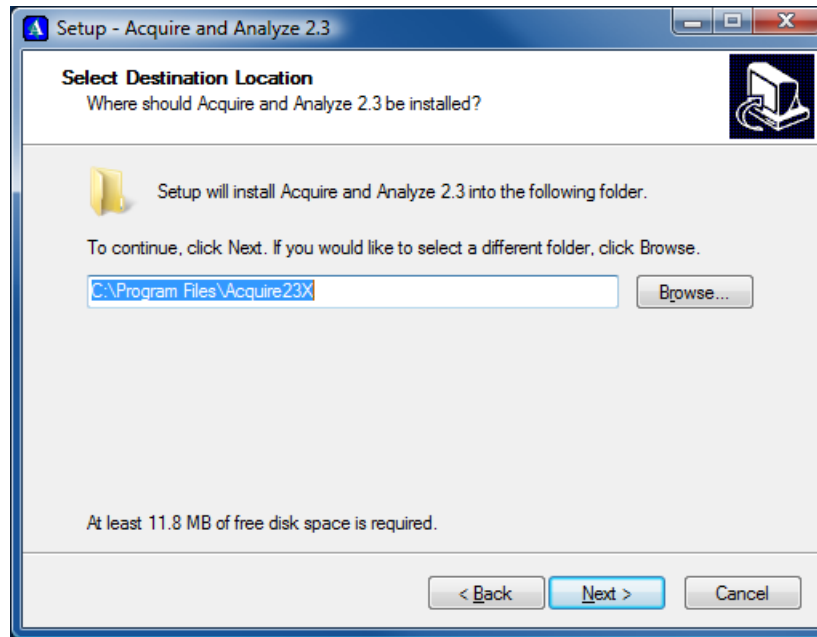
2. On the Welcome screen, click **Next**.



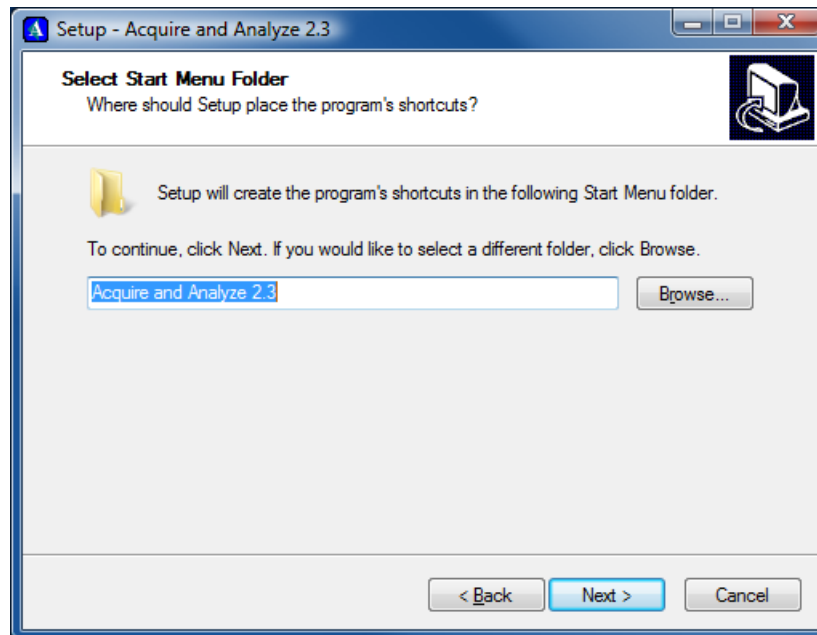
3. Select the Data Acquisition to be used, then click **Next**.



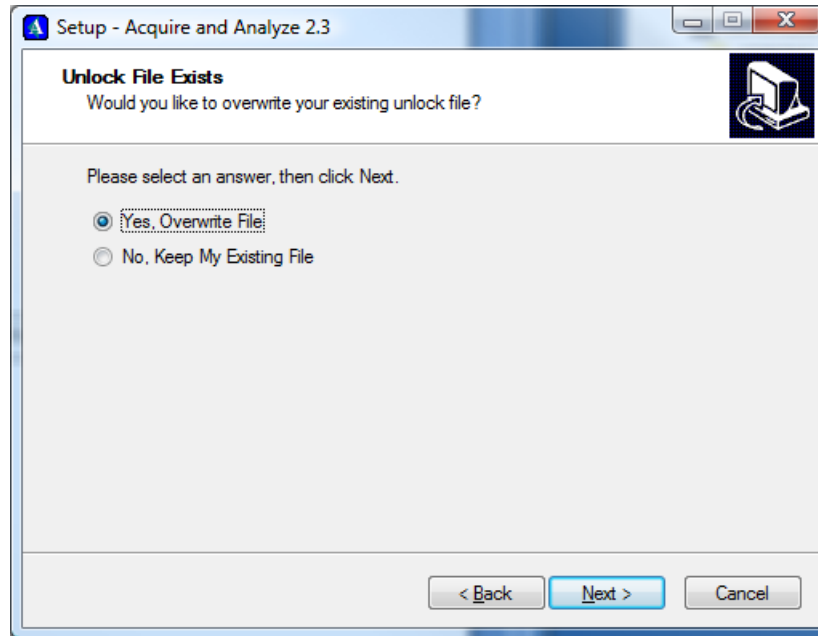
4. Select the destination location, click **Next**.



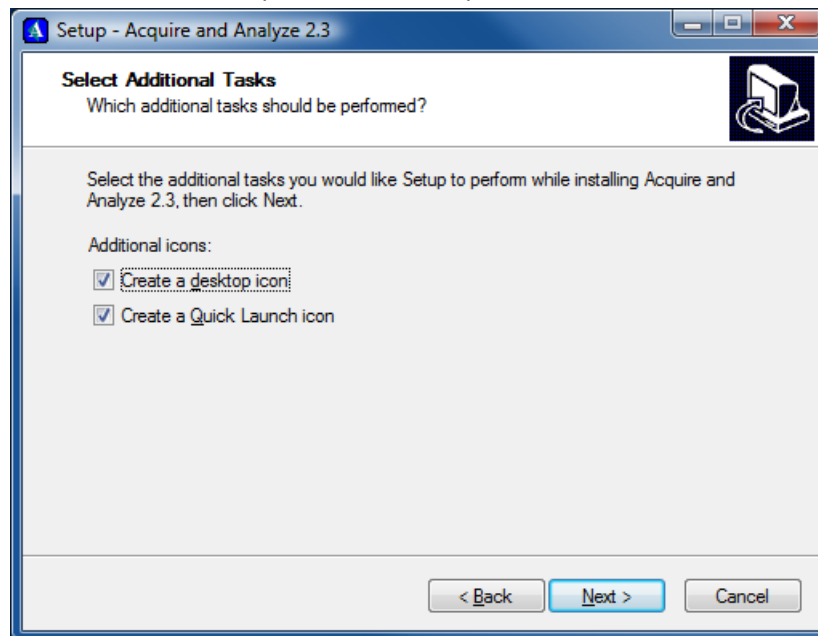
5. Select the start menu folder where to place the shortcuts, click **Next**.



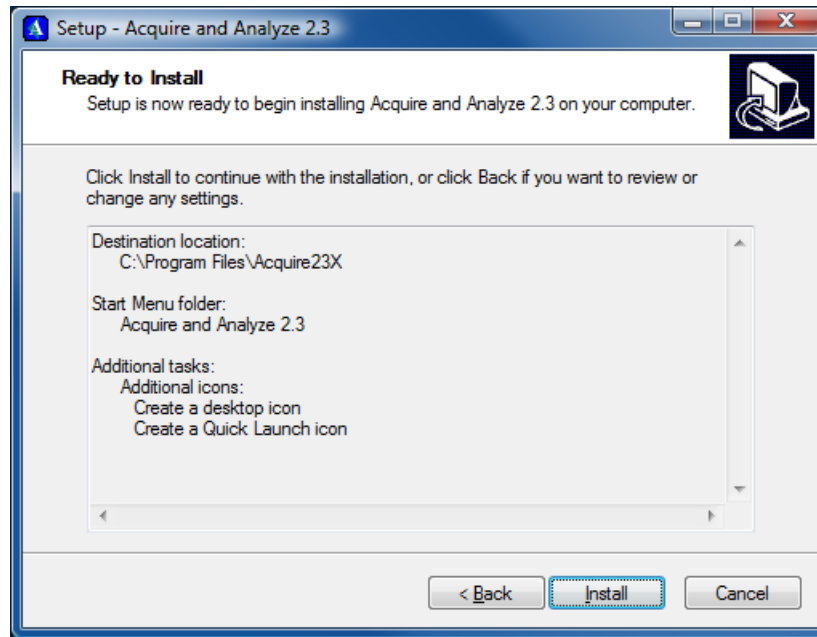
6. **Optional** – If an unlock file is already present in the system AND the CDROM contains an unlock file, the installer will prompt you to either overwrite the existing unlock file on your system, or to keep it. The unlock must match the hardware device.



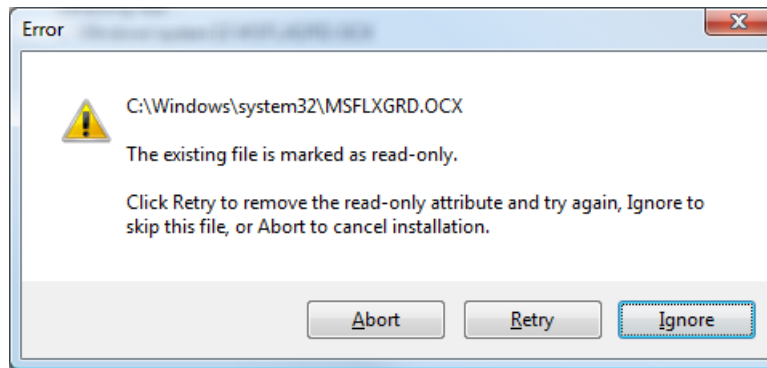
7. Select whether to add a desktop icon, and/or a quick launch icon, click **Next**.



8. Review your installation settings, click **Install**.

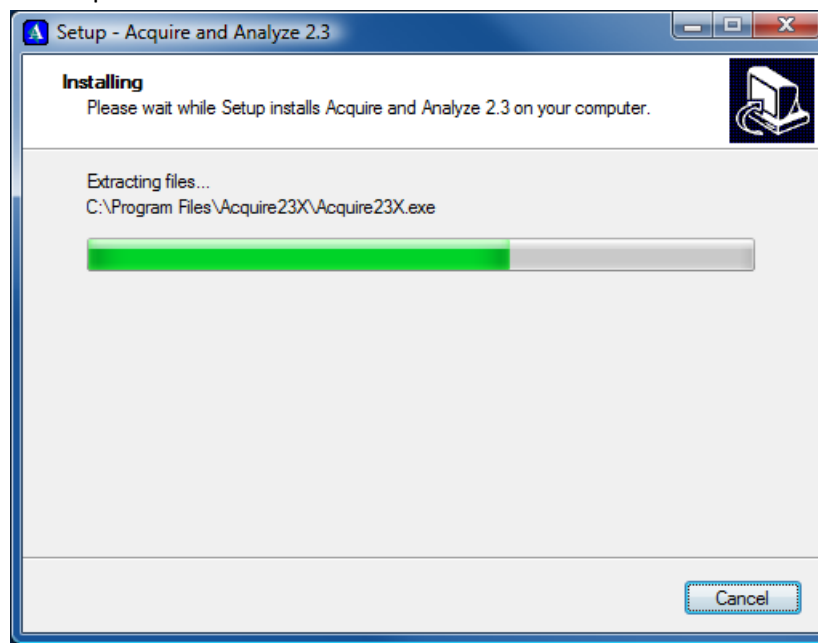


9. **Optional** – If the system already contains some of the common files used by Acquire & Analyze, the installer may prompt you with a similar dialog:

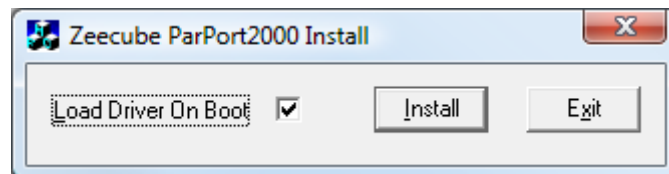


In these cases click **Ignore**.

10. The installer will proceed to install the files



11. A parallel port driver will need to be installed. When prompted, tick the **Load Driver on Boot** checkbox and click **Install**.



12. Once the installation completes, click **Finish**.

